

TAZMEEN WOODALL

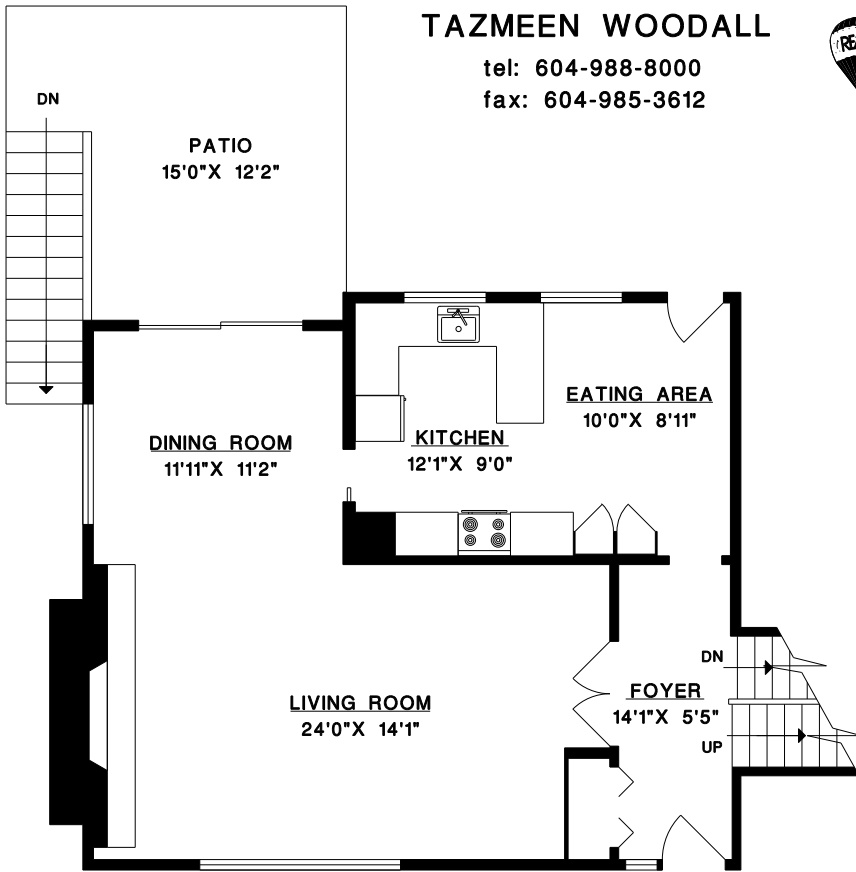
tel: 604-988-8000
 fax: 604-985-3612



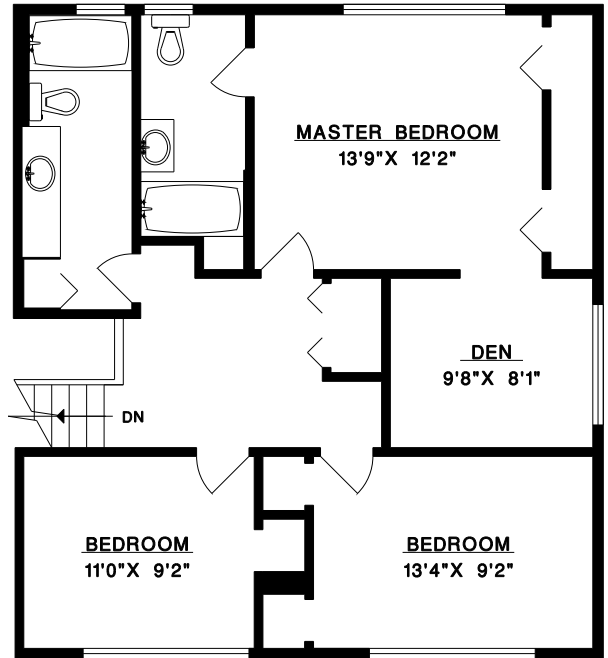
RE/MAX
 RE/MAX CREST REALTY
 101 - 2609 WESTVIEW DR.
 NORTH VANCOUVER, B.C.

**1125 WEST 26TH STREET
 NORTH VANCOUVER**

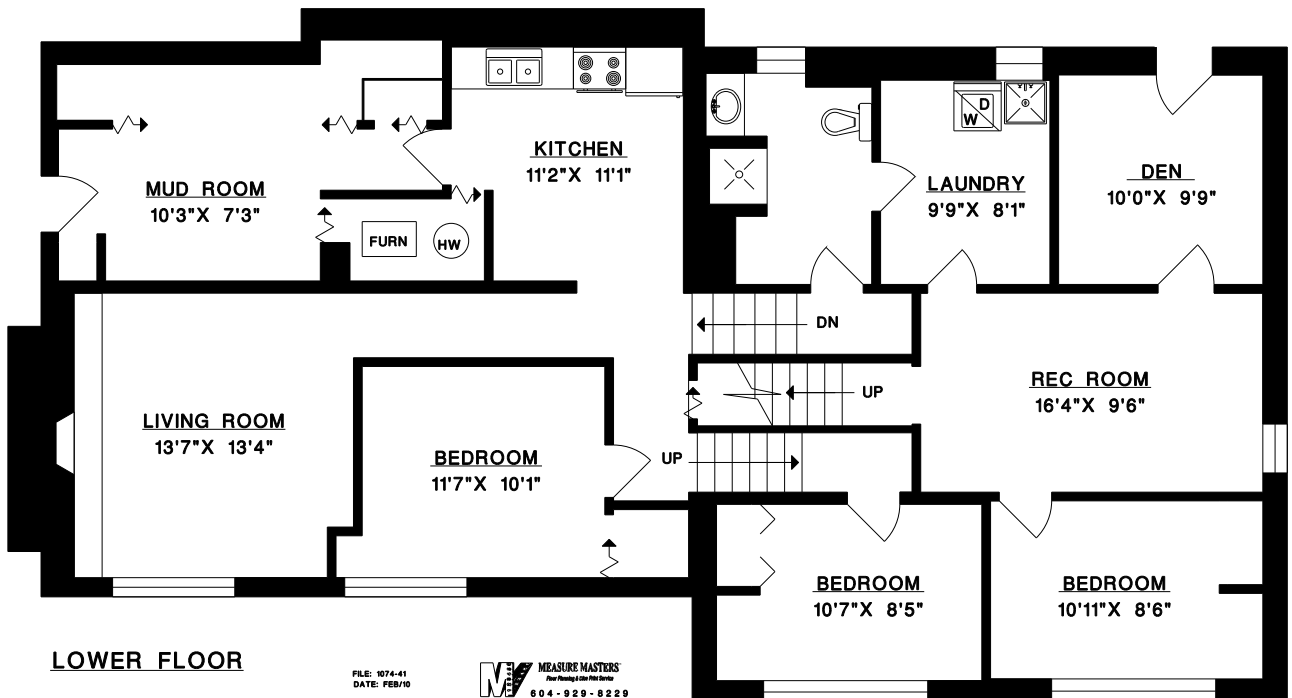
MAIN FLOOR 877 SQ.FT.
 UPPER FLOOR 865 SQ.FT.
 LOWER FLOOR 1,745 SQ.FT.
TOTAL 3,487 SQ.FT.
 PATIO 211 SQ.FT.



MAIN FLOOR



UPPER FLOOR



LOWER FLOOR



FILE: 1074-41
 DATE: FEB/10

