

**#12 - 1207 CONFEDERATION DR.,  
PORT COQUITLAM, B.C.**



Crest Realty

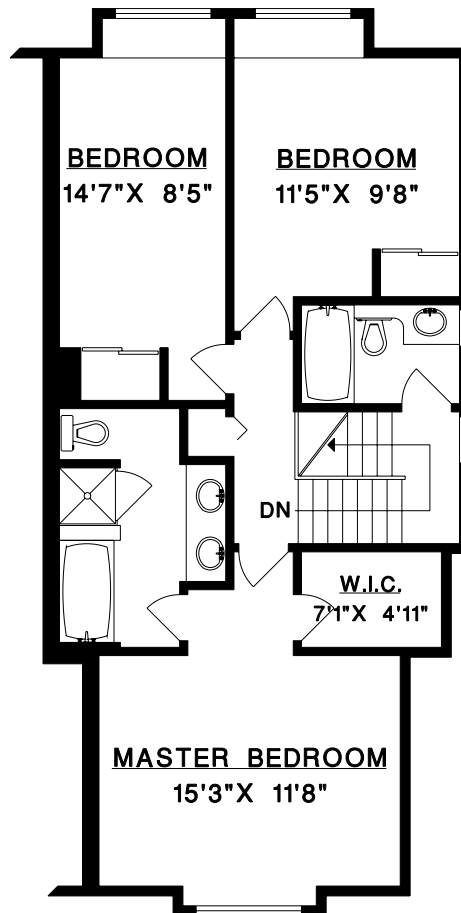
**TAZMEEN WOODALL**  
**604-760-7005**

UPPER FLOOR	851	SQ. FT.
MAIN FLOOR	882	SQ. FT.
*LOWER FLOOR	498	SQ. FT.
<b>TOTAL</b>	<b>2231</b>	<b>SQ. FT.</b>

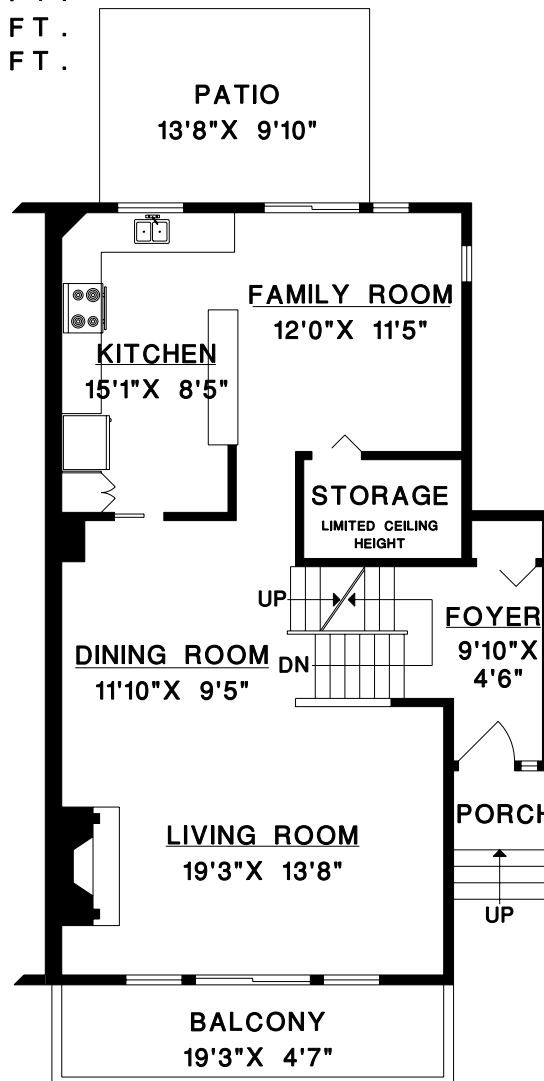
GARAGE	425	SQ. FT.
BALCONY	90	SQ. FT.
PATIO	134	SQ. FT.
PORCH	19	SQ. FT.

\*Includes unfinished areas.

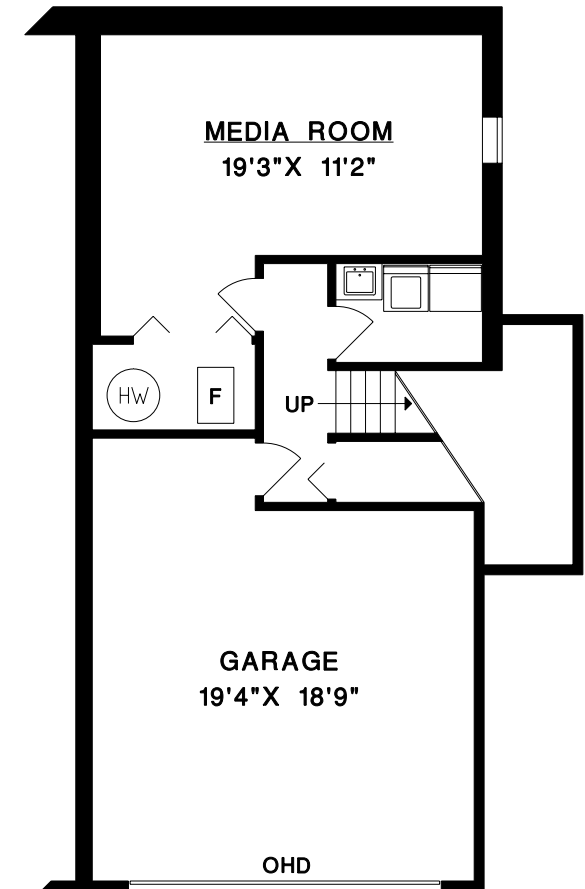
**UPPER FLOOR**



**MAIN FLOOR**



**LOWER FLOOR**



MEASURE MASTERS  
VANCOUVER OFFICE  
(604) 931-8585  
OCT. 2008