

TAZMEEN WOODALL

tel: 604-988-8000

fax: 604-985-3612



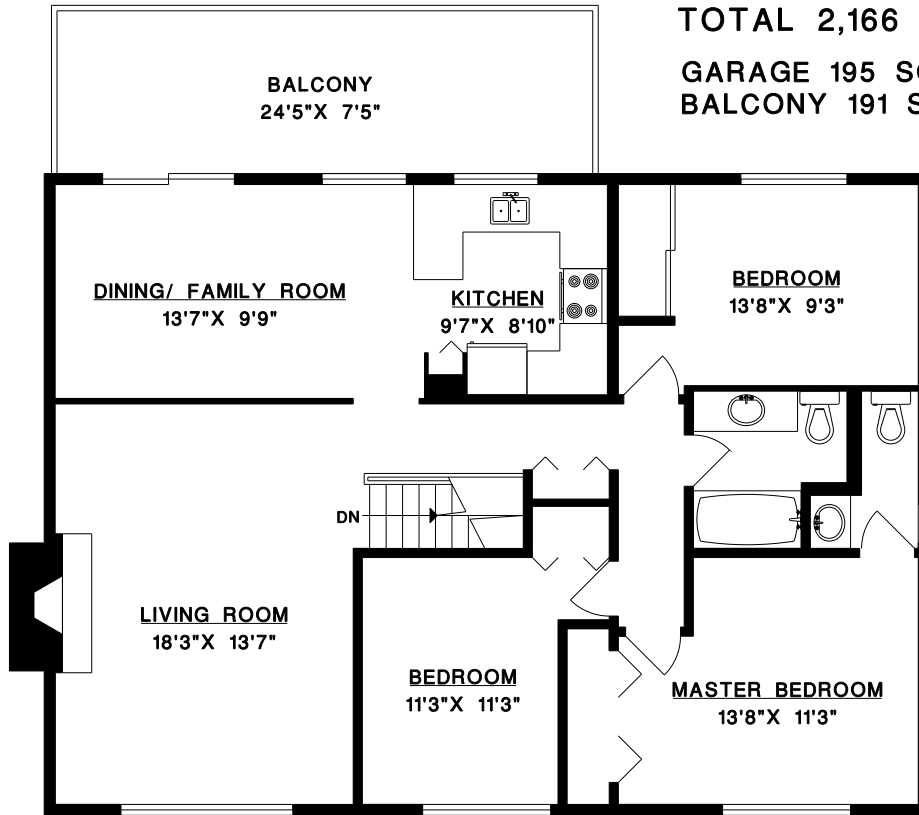
RE/MAX CREST REALTY
101 - 2609 WESTVIEW DR.
NORTH VANCOUVER, B.C.

**1352 ST. STEPHENS PLACE
NORTH VANCOUVER**

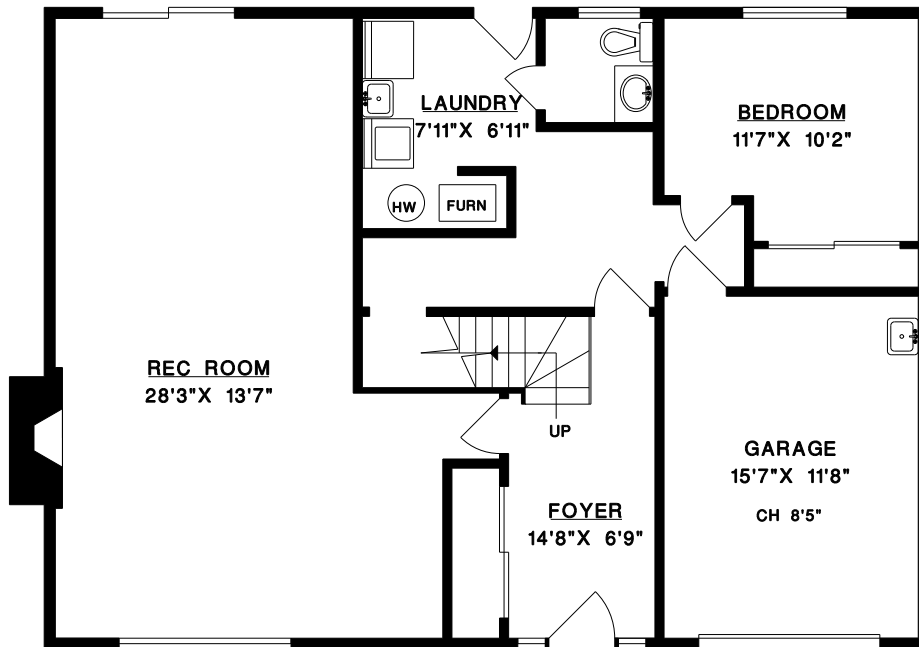
MAIN FLOOR 1,180 SQ.FT.
LOWER FLOOR 986 SQ.FT.

TOTAL 2,166 SQ.FT.

GARAGE 195 SQ.FT.
BALCONY 191 SQ.FT.



MAIN FLOOR



LOWER FLOOR

MEASURE MASTERS
Floor Planning & More Than We Do
604-929-8229

FILE: 1074-39
DATE: NOV/09

